

# // MATERIALI E FINITURE VOGUE

Le ante di questo modello sono di spessore 22 mm nelle diverse finiture sottoriportate.

## ANTE A TELAIO

---

### ROVERE LACCATO



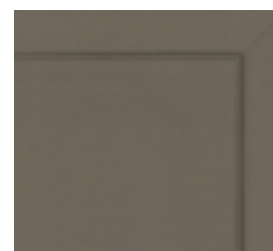
BIANCO



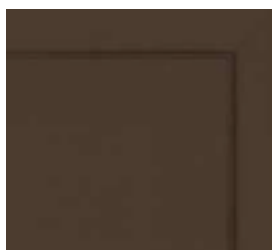
SABBIA ORO



CAPPUCCINO



CAMOSCIO



CIOCCOLATO

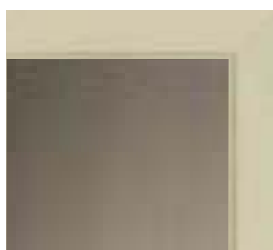


GRIGIO ARDESIA

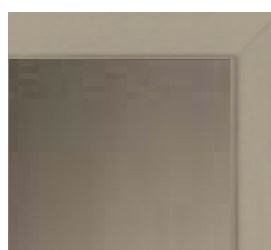
### ROVERE LACCATO E VETRO GRIGIO ARDESIA O TRASPARENTE BRONZATO



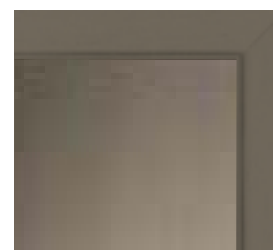
BIANCO



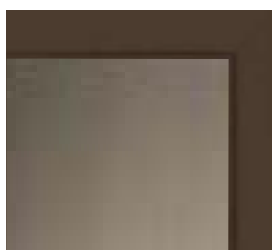
SABBIA ORO



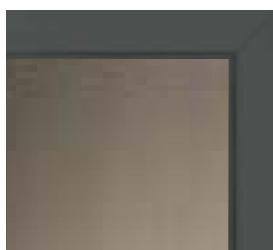
CAPPUCCINO



CAMOSCIO



CIOCCOLATO



GRIGIO ARDESIA

## ROVERE TINTO



ZOLFO

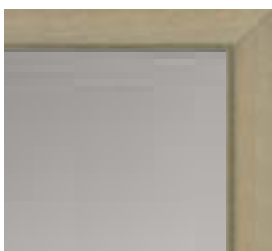


TANNINO

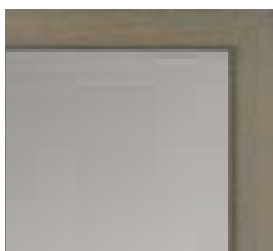


VITE

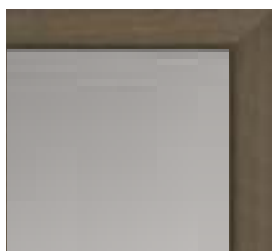
## ROVERE TINTO E VETRO GRIGIO ARDESIA O TRASPARENTE BRONZATO



ZOLFO



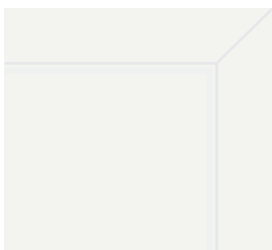
TANNINO



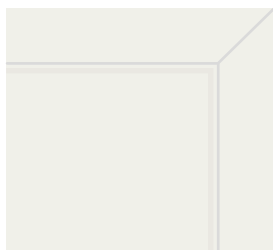
VITE

## ANTA A TELAIO LACCATO OPACO, LUCIDO, SUPER MATT

(18 colori)



BIANCO RAL 9003



BIANCO



BIANCO SALE



BIANCO GRIGIO 233



SABBIA ORO



GRIGIO NUBE 239



TORTORA



CAPPUCCINO



CAMOSCIO



CORDA



ROSSO CORSA



BLU PETROLIO



MUSCHIO



GRIGIO



GRIGIO ARDESIA 7015



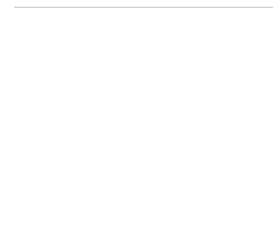
VERDE MARRONE



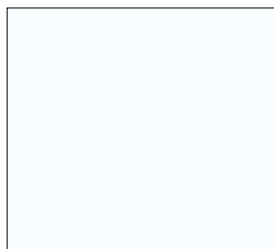
CIOCCOLATO



NERO PROFONDO



## STRUTTURA



BIANCO



GRIGIO SABBIA



ANTRACITE

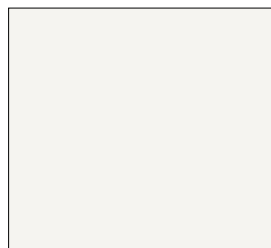
## ZOCCOLO



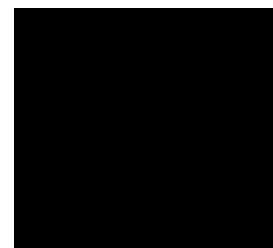
ALLUMINIO OPACO



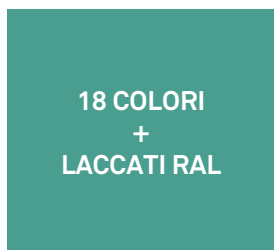
ALLUMINIO CHAMPAGNE



ALLUMINIO BIANCO



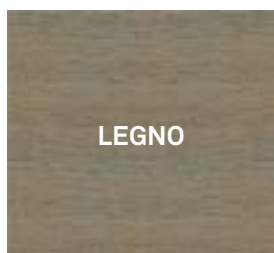
ALLUMINIO NERO



18 COLORI  
+  
LACCATI RAL

ZOCCOLO LACCATO OPACO NEI:

- > 18 COLORI FINITURA ANTA
- > LACCATI RAL



LEGNO

ZOCCOLO LEGNO IN :

- > FINITURE COME IMPIALLACCIATI

\*\*\*\*\*

Eventuali differenze di tonalità nei colori e nei legni non sono da considerarsi difetti di fabbricazione in quanto tali variazioni sono dovute al naturale comportamento degli elementi esposti alla luce domestica.